

YEAR 2009

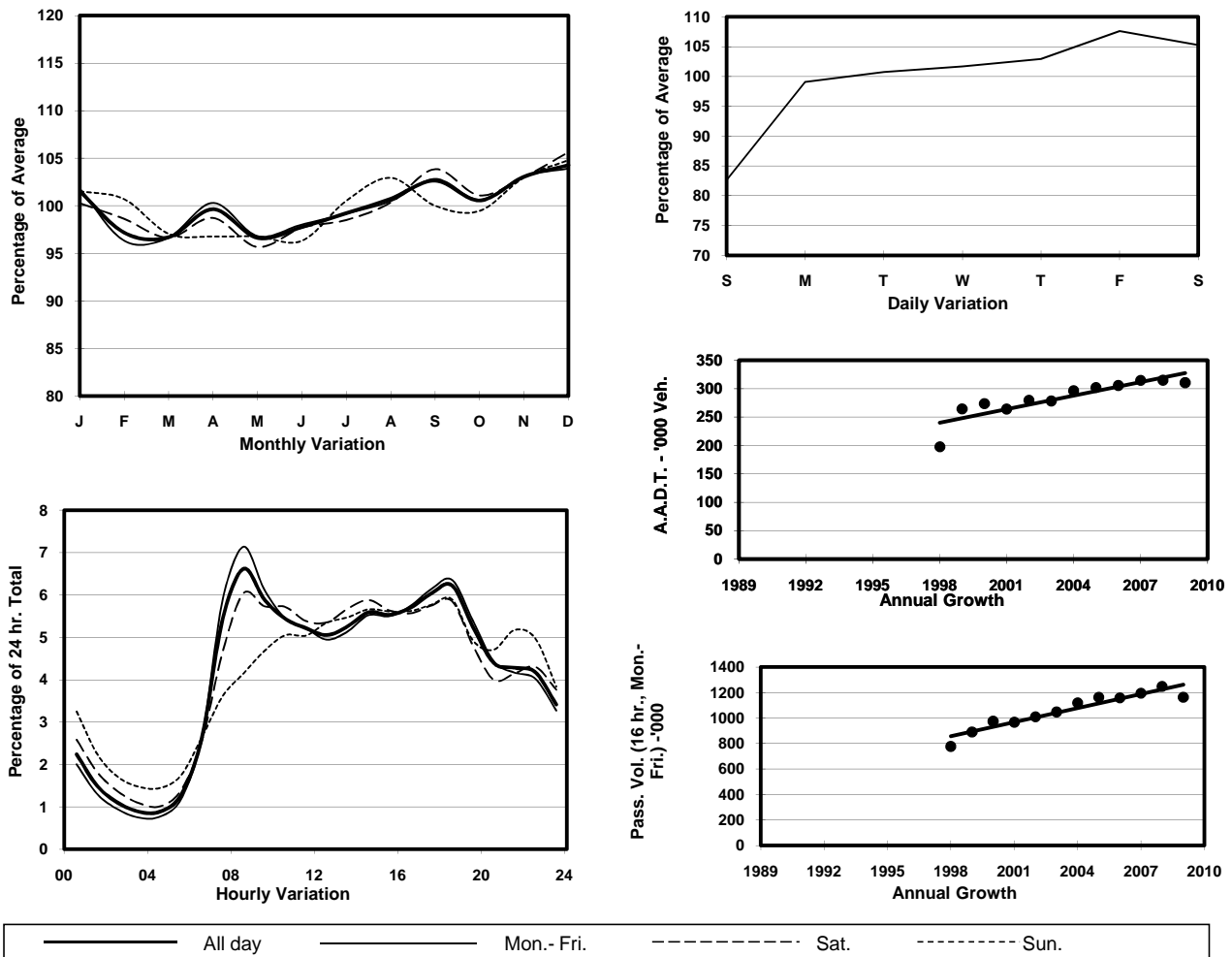
Location

Tsing Yi External Cordon(Tsing Yi Area Boundary)

Stations on Cordon/Screenline

5018, 5027, 5033, 5034, 6219 and 6221

1. TRAFFIC FLOW VARIATION AND GROWTH



2. TRAFFIC CHARACTERISTICS (BY DIRECTION)

Parameter	All - Day	Mon. - Fri.	Sat.	Sun.
IN BOUND				
A.A.D.T.	152750	157870	162170	128010
R 12 / 24 - %	70.3	71.7	69.2	63.8
R 16 / 24 - %	86.8	87.8	85.3	82.9
AM Peak Hour	0800-0900	0800-0900	0800-0900	0900-1000
One-way flow at AM peak hour	11140	12440	10940	6040
T - % (AM)	-	25.6	-	-
PM Peak Hour	1800-1900	1800-1900	1800-1900	1800-1900
One-way flow at PM peak hour	9480	9910	9520	7920
T - % (PM)	-	22.7	-	-
Prop.of commercial vehicles - 16 hr.	-	26.2	-	-
OUT BOUND				
A.A.D.T.	157720	163260	167740	130770
R 12 / 24 - %	65.7	66.7	65.3	60
R 16 / 24 - %	85.4	86.5	83.6	80.5
AM Peak Hour	0800-0900	0800-0900	0900-1000	0900-1000
One-way flow at AM peak hour	9410	10480	9160	6070
T - % (AM)	-	24.8	-	-
PM Peak Hour	1800-1900	1800-1900	1800-1900	1700-1800
One-way flow at PM peak hour	9850	10490	9790	7340
T - % (PM)	-	23.8	-	-
Prop.of commercial vehicles - 16 hr.	-	26.1	-	-

3. OTHER INFORMATION AND COMMENT

4. Vehicle classification and occupancy - Monday to Friday

Time		Class of vehicle									
		Motor	Private	Taxi	Private	PLB	Goods veh.		Non	Fr. Bus	
		Cycle	Car		LB		Light	M & H	Fr. Bus	SD	DD
0700-0800	Pro	2.5	30.7	21.0	0.6	2.8	17.4	12.3	7.0	0.1	5.6
	Ocp	1.1	1.5	1.9	3.8	11.2	1.7	1.2	22.4	6.9	52.6
0800-0900 Peak Hour	Pro	2.3	38.8	15.7	0.7	1.9	15.4	14.2	6.1	0.1	4.9
	Ocp	1.1	1.5	2.0	5.2	12.4	1.6	1.2	26.7	16.2	57.0
0900-1000	Pro	1.4	34.4	12.3	0.8	1.9	22.4	17.9	4.0	0.1	4.9
	Ocp	1.1	1.5	1.9	2.9	11.6	1.5	1.2	14.6	11.7	31.1
1000-1100	Pro	1.4	29.6	13.7	0.8	1.8	23.6	21.0	3.4	0.1	4.7
	Ocp	1.1	1.5	1.8	3.1	9.2	1.5	1.2	13.7	7.4	25.5
1100-1200	Pro	1.4	30.1	13.4	0.9	1.9	23.3	21.2	3.3	0.1	4.4
	Ocp	1.1	1.6	2.0	2.9	7.9	1.5	1.2	11.4	12.0	23.1
1200-1300	Pro	1.0	32.4	14.2	0.8	2.2	22.1	18.7	4.0	0.1	4.6
	Ocp	1.0	1.6	2.0	3.6	8.5	1.5	1.2	10.3	11.9	23.1
1300-1400	Pro	1.2	30.3	13.1	0.6	2.2	22.9	21.4	3.8	0.1	4.5
	Ocp	1.1	1.6	1.9	2.9	8.6	1.6	1.2	12.0	12.8	26.9
1400-1500	Pro	1.6	31.6	11.7	0.8	1.8	23.2	21.3	3.6	0.1	4.2
	Ocp	1.1	1.6	2.0	3.3	8.8	1.5	1.2	14.9	10.6	24.2
1500-1600	Pro	1.4	32.1	10.5	1.1	2.0	23.2	20.3	4.7	0.1	4.6
	Ocp	1.1	1.7	2.0	4.1	10.2	1.5	1.2	14.8	8.2	22.2
1600-1700	Pro	1.4	32.2	12.4	0.8	1.9	21.7	19.5	5.4	0.1	4.6
	Ocp	1.1	1.7	1.9	4.7	11.0	1.6	1.2	10.8	10.9	29.5
1700-1800	Pro	2.7	34.1	11.6	1.1	2.0	20.9	17.0	5.5	0.1	5.1
	Ocp	1.2	1.6	2.0	2.6	12.8	1.6	1.2	13.4	10.3	38.7
1800-1900	Pro	3.1	44.6	10.8	0.5	2.1	15.7	12.6	5.4	0.1	5.1
	Ocp	1.1	1.6	2.2	3.6	13.9	1.5	1.2	21.2	14.6	52.6
1900-2000	Pro	1.8	46.3	12.6	0.5	2.7	13.6	11.9	5.1	0.1	5.5
	Ocp	1.1	1.5	2.0	2.5	12.7	1.5	1.1	18.8	11.3	44.3
2000-2100	Pro	1.7	42.3	20.2	0.6	2.5	10.7	11.2	4.8	0.1	6.0
	Ocp	1.2	1.7	2.1	2.0	9.3	1.6	1.2	16.5	12.0	31.1
2100-2200	Pro	2.4	45.1	20.3	0.4	2.5	9.6	9.6	4.0	0.2	6.0
	Ocp	1.2	1.6	2.1	3.0	9.3	1.4	1.1	11.0	8.8	28.3
2200-2300	Pro	2.3	48.1	20.7	0.2	2.8	7.6	9.8	2.5	0.1	5.9
	Ocp	1.2	1.7	2.0	1.9	9.1	1.5	1.2	12.0	8.6	32.0
16 hours	Pro	1.9	36.1	14.3	0.7	2.2	18.7	16.4	4.6	0.1	5.0
	Ocp	1.1	1.6	2.0	3.4	10.6	1.5	1.2	16.6	10.9	35.4

Legend

- Pro.** Proportion of vehicles in % (Sum may not add up to 100% due to figure rounding)
- Ocp.** Average occupancy of vehicles
- M & H** Medium and Heavy